

The Masters of Industrial Weighing

# FFX LOAD CELL



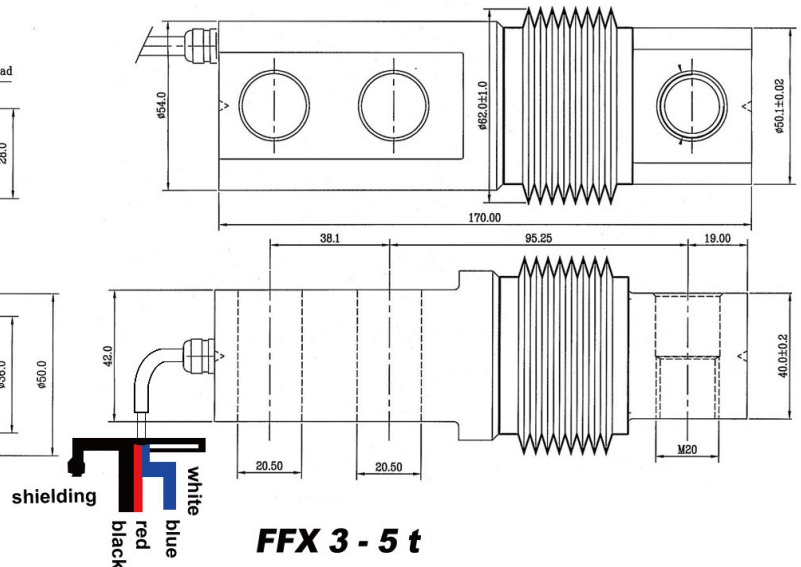
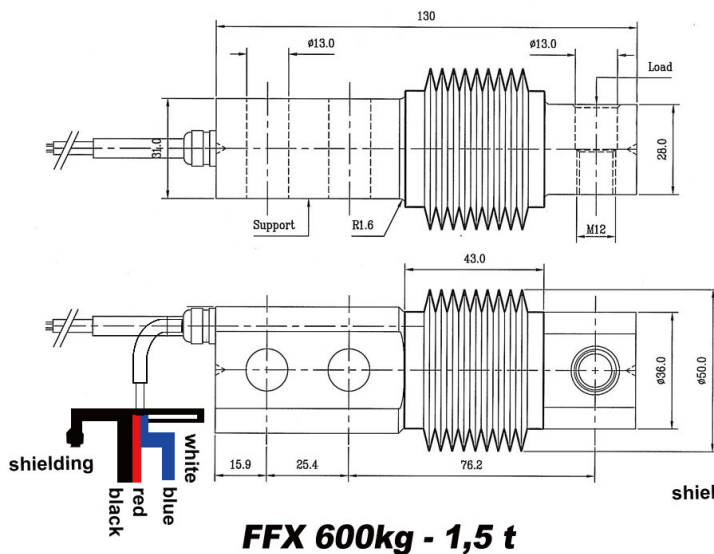
**Stainless steel bending beam load cell, fully welded hermetically sealed.**

**IP68 protection**

**Suited for all industrial applications where a high accuracy is needed.**

**EEC approval from 3000 to 6000 d in class III according to R60 OIML requirements.**

**FFX can be used for weighing silos, hoppers, tanks, blenders, ...**



- N** - signal
- R** + signal
- Bl** + excit
- Bl** - excit

## The Masters of Industrial Weighing

ELECTRICAL SPECIFICATIONS		
Type	FFX	FFX
Nominal input voltage	10V	10V
Maximal input voltage	12V	12V
Minimum input voltage	5V	5V
Input resistance	420 Ω ± 50 Ω	420 Ω ± 50 Ω
Output resistance	352 Ω ± 2 Ω	352 Ω ± 2 Ω
Insulation resistance	> 2000 MΩ	> 2000 MΩ
Length of wire	5 m	5 m
METROLOGICAL SPECIFICATIONS		
Nominal load (E max)	600 kg, 1.5 t	3, 5 t
Accuracy class	3000 ou 6000 d OIML	3000 d OIML
Nominal sensitivity	2 m V/V ± 1 %	2 m V/V ± 1 %
Combined error	≤ 0,008 % S	≤ 0,017 % S
Non repeatability	≤ 0,008 % S	≤ 0,01 % S
Temp. coef. of zero	± 0,001 % S/°C	± 0,002 % S/°C
Temp. coef. of sensitivity	± 0,0006 % S/°C	± 0,001 % S/°C
Creep error	0,01 % S	0,02 % S
APPROVED WEIGHING SPECIFICATIONS		
E max	600, 1500 kg	3000, 5000 kg
n max	3000 ou 6000	3000
Y = E max / v min	10100	10100
Z	8000	6000
GENERAL SPECIFICATIONS		
Safe overload	150 % C.N.	150 % C.N.
Maximum overload	200 % C.N.	200 % C.N.
Nominal temperature range	-10 °C / +40°C	-10 °C / +40°C
Operational temperature range	- 20°C / + 60°C	- 20°C / + 60°C
Level of protection	IP68	IP68
Material	Stainless steel	Stainless steel
Net weight	0.8 kg	1.9 kg



## FLEXBOX

COMPRESSION MOUNTING  
ASSEMBLY



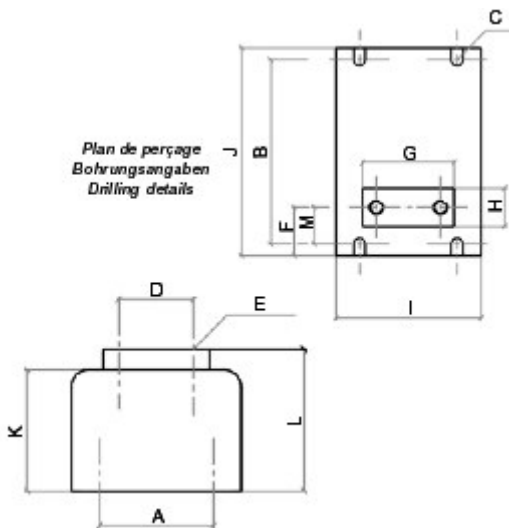
The Flexbox is manufactured from stainless steel or zinc and offers a complete protection to the load cell against shock, airborne contamination and liquids.

An internal load cell protection device allows the load cell to accept up to 150 % overload.

The Flexbox is specially designed to allow the system to be washed if required with a water spray.

The load cell is mounted in compression mode and has a rounded top section, which eliminates settlement of dust or over spilled product to adhere to the housing.

Accuracy : from 3000 up to 6000 d OIML.



	FFX 600 – 1500 kg	FFX 3 –5 t
A	80	90
B	155	180
C	4 x CHC M8	4 x CHC M12
D	52	60
E	2 x M12	2 x M12
F	41	45
G	75	100
H	32	36
I	120	150
J	175	210
K	85	120
L	100	135
M	31	30