

The Masters of Industrial Weighing

TAP LOAD CELL

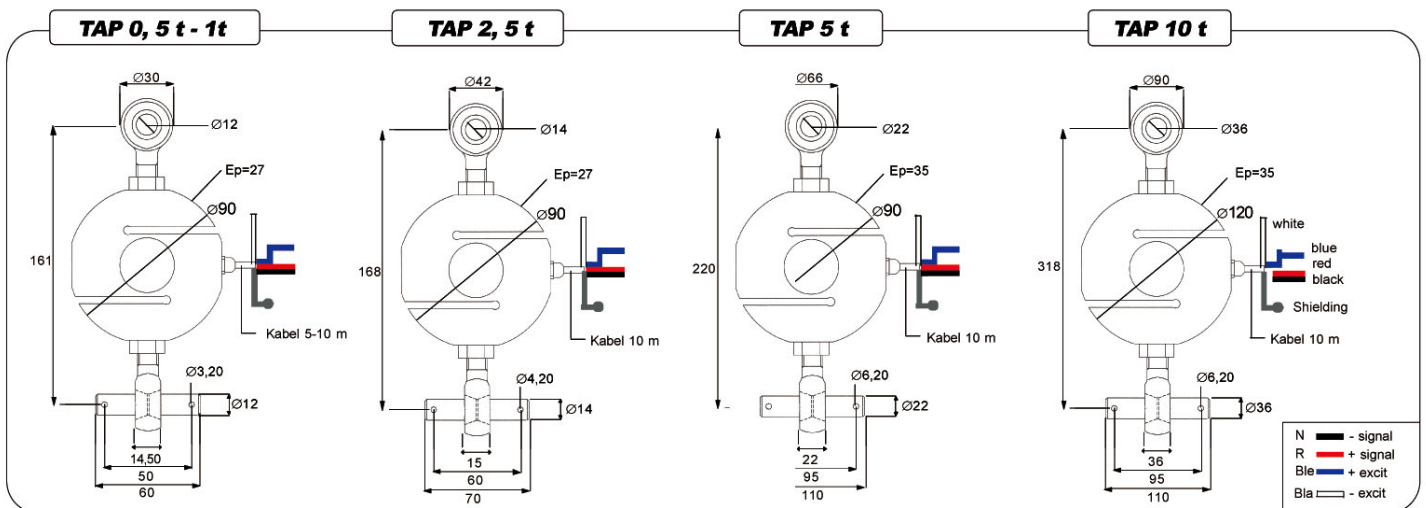


"S" beam load cell, made of aluminum (500, 1000 kg) and stainless steel (2500 kg to 10 000 kg) for tension applications.

Mechanical uncoupling by rod ends and spherical bearings.

This load cell can be used with hopper scales, belt scales and general process weighing.

EEC approval up to 2000d in class III.



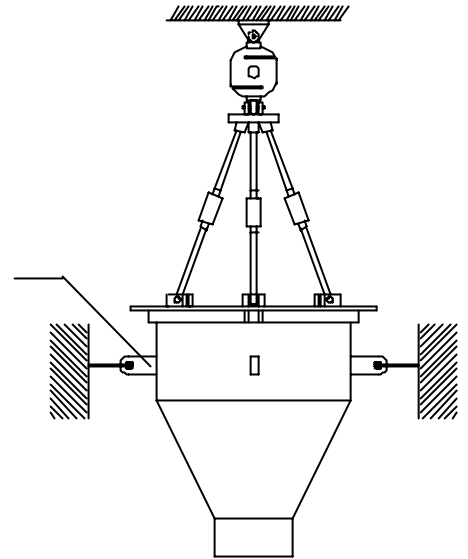
The Masters of Industrial Weighing

ELECTRICAL SPECIFICATIONS					
Type	TAP 500	TAP 1000	TAP 2500	TAP 5000	TAP 10000
Order reference	013 030 010	013 030 020	013 030 030	013 030 050	013 030 070
Nominal input voltage	10 V	10 V	10 V	10 V	10 V
Maximum input voltage	15 V	15 V	15 V	12 V	12 V
Input resistance	400 Ω ± 20 Ω	400 Ω ± 20 Ω	400 Ω ± 20 Ω	400 Ω ± 40 Ω	400 Ω ± 40 Ω
Output resistance			352 Ω ± 20 Ω		
Insulation resistance			>2000 M Ω		
Length of wire	5 m	10 m	10 m	10 m	10 m
METROLOGICAL SPECIFICATIONS					
Nominal load (E max)	500 kg	1000 kg	2500 kg	5000 kg	10000 kg
Accuracy class			2000 d.OIML		
Nominal sensitivity	2,5 ± 1 % (mV/V)	2,2 ± 1 % (mV/V)	2,5 ± 1 % (mV/V)	2 ± 1 % (mV/V)	2 ± 1 % (mV/V)
Combined error			0,03 % S		
Non repeatability			0,03 % S		
Temp. coef. Of zero			≤± 0,003 % S/°C		
Temp. coef. Of sensitivity			≤± 0,003 % S/°C		
Creep error			0,02 % S		
E max (Kg)	500	1000	25000	5000	10000
N max (d)			2000		
Y= E max / v min	5000	5000	5000	10000	10000
Z	5000	5000	5000	7500	7500
GENERAL SPECIFICATIONS /					
Safe overload			150 % C.N.		3000, 5000 kg
Maximum overload			200 % C.N.		3000
Nominal temperature range			-10... + 40 °C		10100
Operational temperature range			-30... + 80 °C		6000
Level of protection			IP 6 8 N F C 2 0-010		
Material (Aluminum / stainless steel)	Aluminium (500 , 1 000 kg), Stainless steel (2 500 kg - 10 000 kg)				

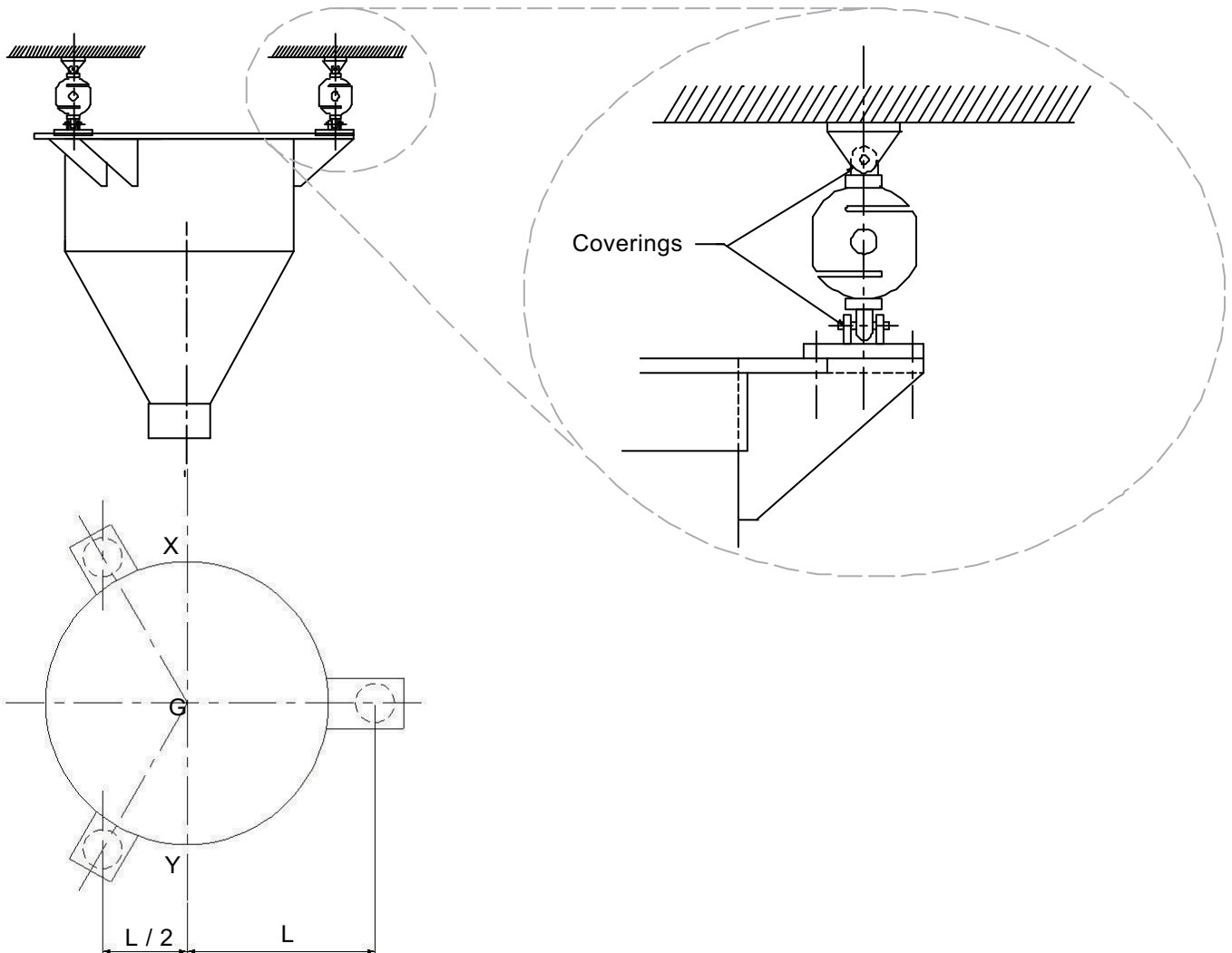
Mounting examples

➔ Hopper weighing by single point tension load cell

Stabilisation is achieved by 3 or 4 flexible cables or chains allowing a very small lateral movement of the hopper or central pulley.



➔ Hopper weighing by 3 point tension load cells



NOTE : the coverings mounted on the tank will all be positioned parallel to the XY axis.